

Application examples from practice:

Soft liner | Soft socket for below-knee prostheses



Material used:

Material	Layer		Function	Colour	Strength
nora® Lunatec combi 7	Cushion	(Lunasoft SLW)	Cushioning	07 flesh colour	3 mm
	Stabilisation	(Lunasoft SL)	Stabilising	19 stone	4 mm

Manufacture:

1.



Cut **nora® Lunatec combi 7** to size.

The dimensions of the material in the width correspond to the actual dimensions of the upper and lower stump circumference (cut in trapezoidal shape).

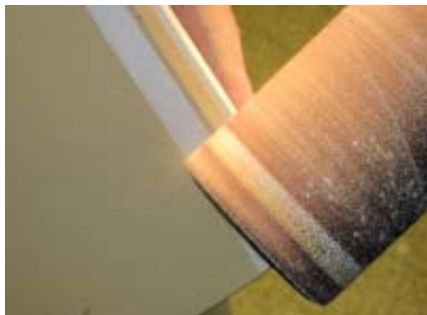
It is recommended to add approx. 3-4 cm in length.

2.



Affix masking tape to the long trimmed edge at a distance of 1/1.5 cm from the edge.

3.



Grind the edges on both sides with a grinding machine or grinding attachment of the socket router to zero.

4.



Apply temperature-resistant adhesive 2 x to the grinding edge up to the masking tape and leave to air.

Adhesive recommendation: Colle de Cologne universal adhesive (Renia).

Then remove the masking tape.

5.



Carefully put together the chamfered edges and paste together.

Then pat with a hammer over a rivet rod.

6.



Heating of nora® Lunatec combi 7 in a closed heat source.

Setting of oven: 130° - 150°C

Heating: approx. 5 minutes

7.



Swiftly slip over the stump model and form manually point by point.

Let cool down.

Cooling: approx. 10 minutes

After the cooling down time, remove from model. Then produce the stump end cap and paste adequately.

Hint: in case of a regular, round stump model, the material can be formed with the help of a tightly wrapped elastic bandage. Irregular models should be formed point by point to prevent material concentrations at the edges.